

It is with sincere apologies that I inform you that the planned NZEI (teacher union) paid stop work meeting advertised in last week's newsletter, **has been postponed** and will take place sometime in Term 2 (Please note that this was nothing to do with the school).

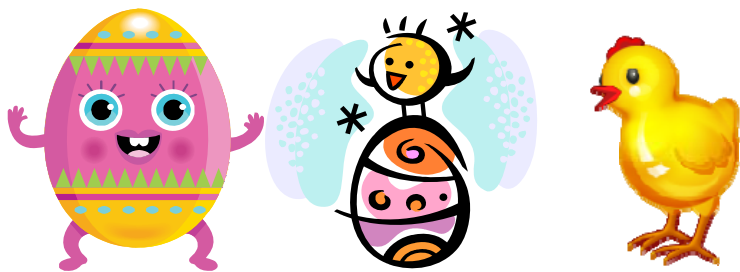
HAPPY BIRTHDAY THIS WEEK TO: Nicholas Epskamp, Cody Fairbairn, Jackson Somers and Hikoirangi Paki.

WARM WELCOME THIS WEEK TO: Maatika Heketoa, we wish you a long and enjoyable stay with us.

ENTERTAINMENT BOOK – this year's 2010/11 Entertainment Books are now available for order. The commission we gain from these sales goes to fund the End-of-Year Fun Day. The cost is \$65 but if you use the restaurant vouchers just twice, you recover what you paid for the book. A separate notice accompanies this newsletter.

EASTER RAFFLE – each year we have just two major school fundraisers. One is the Easter Raffle and one in Term 4 is a 'Sponsor-athon'. The Easter Raffle is simple – you get a sheet of 5 tickets @ \$1 each.

- a) Sell the whole 5 and return the butts and cash to school
- b) Sell 1-4 tickets, send the butts and cash to school
- c) If you don't wish to be involved, simply return the sheet of tickets to school.



POSITIVE FEEDBACK – just lately I have received really positive feedback about the school from shopkeepers, prospective parents and existing parents. It all seemed to come together so it was really nice (and flattering) to receive. The most common comments were the atmosphere, the appearance, the children and the standards. I also continue to get positive feedback about the Christmas Parade float and school band.

QUOTE - *"No act of kindness, no matter how small, is ever wasted"*

TERM DATES

Wednesday 17 th March	School athletics
Wednesday 24 th March	Zone athletics
Wednesday 30 th March	Learning Expo Day 9-10:00 am
	Poetry Contest
Thursday 1 st April	Term Ends 3:00 pm
	Senior Syndicate Concert
	Easter Raffle Draw
	School Donation Lucky Draw

SCHOOL DONATION is voluntary, is tax deductible, puts you into a draw with 2 DVD players as prizes and funds our school reading budget. The cost is \$60 per child or \$90 per family for the year or \$20 per term. We really appreciate those people who are able to make this donation and assure you your money is spent wisely and well. I believe we are still the only school in New Zealand to offer a money back guarantee whereby if you are unhappy with any aspect of our school performance and notify us on December 1st, we will refund your donation, no questions asked. You can pay by cash, cheque, eftpos or visa.

CALLING FOR PARENT VOLUNTEERS FOR ROAD PATROL – to assist after and/or before school with our Warden Patrols – cnr Matipo & Taikata Roads (by the Dairy), before school or after school 3:00-3:15pm. Please leave your name & contact details with the office if you are able to help. This is a very busy corner and often cars do not indicate or are travelling at speed.

NO FRIDAY ASSEMBLY TOMORROW

COMMUNITY BEWARE – burglars are targeting Te Atatu Peninsula with frightening force. Working as a team, a person comes up a driveway with a cell phone, assesses if anyone is home, advises a car parked close by, and within 30 minutes the offenders have entered your home, burgled and left. Be vigilant in locking your homes, windows and belongings - any suspicious persons report immediately to Te Atatu Police on 834 5812 or Henderson police on 839 0600.

RETURN TO OFFICE – SCHOOL DONATION 2010

Name of child: _____ **Rm :** _____

Please find \$60/\$90 enclosed for 2010 school donation (We will send your tax receipt and put you in the Lucky Prize Draw.

Signed: _____
(cash, visa, eftpos, cheque)

*TOO MUCH T.V IS BAD FOR LEARNING * *READ WITH YOUR CHILD EVERY NIGHT**